

Intel® Server Chassis SR2300 Quick Start User Guide

Start Here

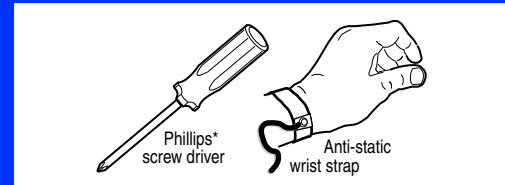
Thank you for buying an Intel® Server Chassis. The following information will help you prepare your server chassis for integration with your selected server board.

This Guide is for technically qualified persons. Expanded installation instructions and complete product information are available in the *Product Guide* on the Chassis Documentation CD. Spanish and Simplified Chinese translations of the *Product Guide* are also available on the Documentation CD.

For more information on using the features of your server chassis, see the Configuration Quick Reference Label inside the chassis cover and your *Product Guide*.

Before you begin

You will need the following tools and equipment:



See your *Product Guide* for product Safety and EMC regulatory compliance information.

If you are not familiar with ESD (Electro-Static Discharge) Procedures to be used during system assembly, complete ESD Procedures are described in your *Product Guide*.

Additional resources and support for your server chassis can be found at:
<http://support.intel.com/support/motherboards/server/chassis/SR2300>

Build Value with Intel

Server Products, Programs and Support
 Get the high-value server solutions you need by taking advantage of the outstanding value Intel provides to system integrators:

- High-quality server building blocks
- Extensive breadth of server building blocks
- Solutions and tools to enable e-Business
- Intel® Server Management
- Comprehensive training services†
- Worldwide 24x7 technical support (AT&T Country Code + 866-655-6565)†
- World-class service, including a three-year limited warranty and Advanced Warranty Replacement†

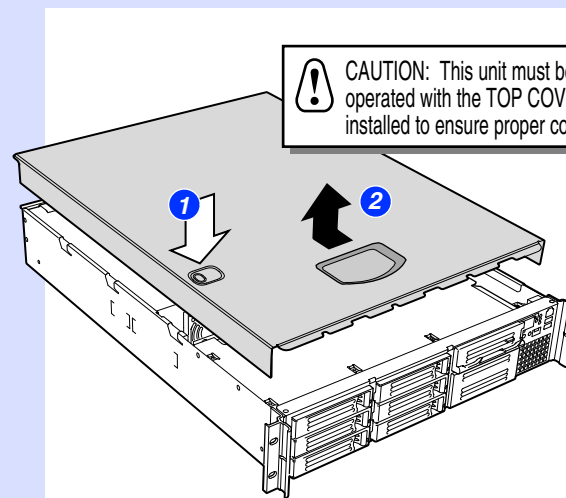
For more information on Intel's added-value server offerings, visit the Intel® ServerBuilder website at: www.intel.com/go/serverbuilder

Intel ServerBuilder is your one-stop shop for information about all of Intel's Server Building Blocks such as:

- Product information including product briefs and technical product specifications
- Sales tools such as videos and presentations
- Configurator Tools to help you build complete solutions
- Training information such as the Intel® Online Learning Center
- Support Information and much more

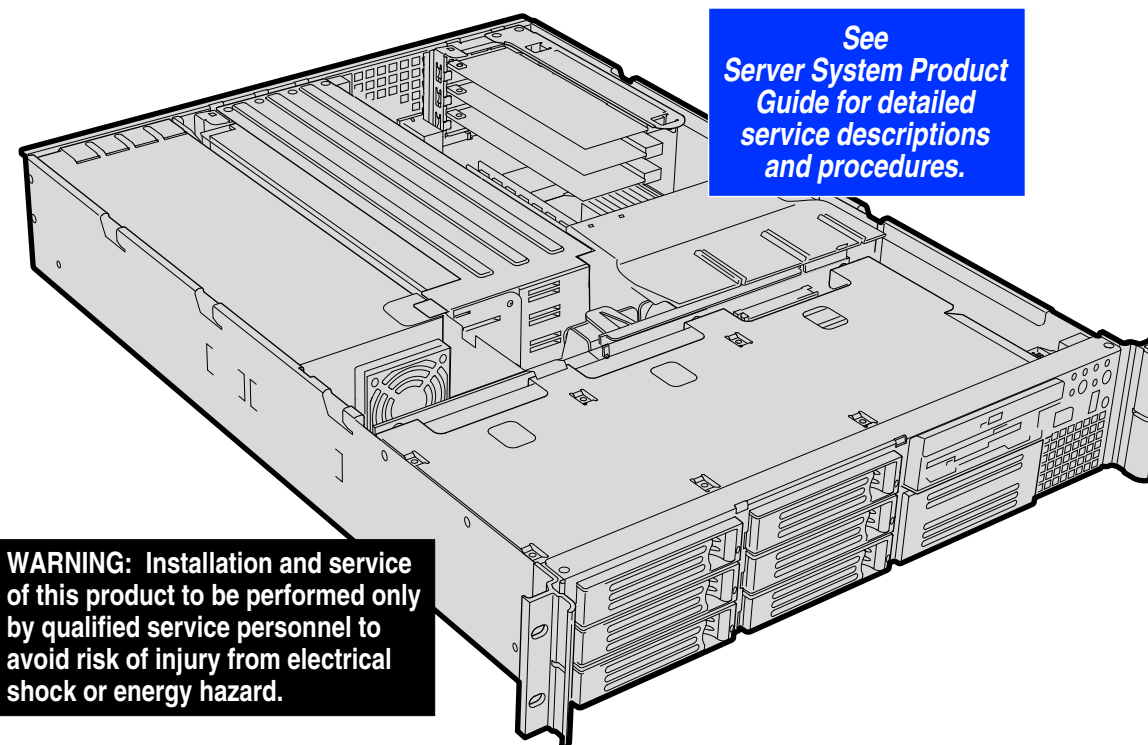
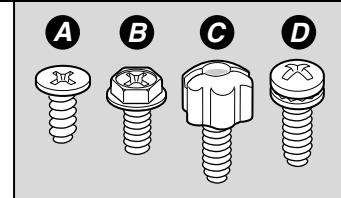
†Available only to Intel® Channel Program Members, part of Intel® e-Business Network.

1 Removing the Top Cover



To remove the system Top Cover:
 1 Depress latch.
 2 Slide toward rear and lift upward.

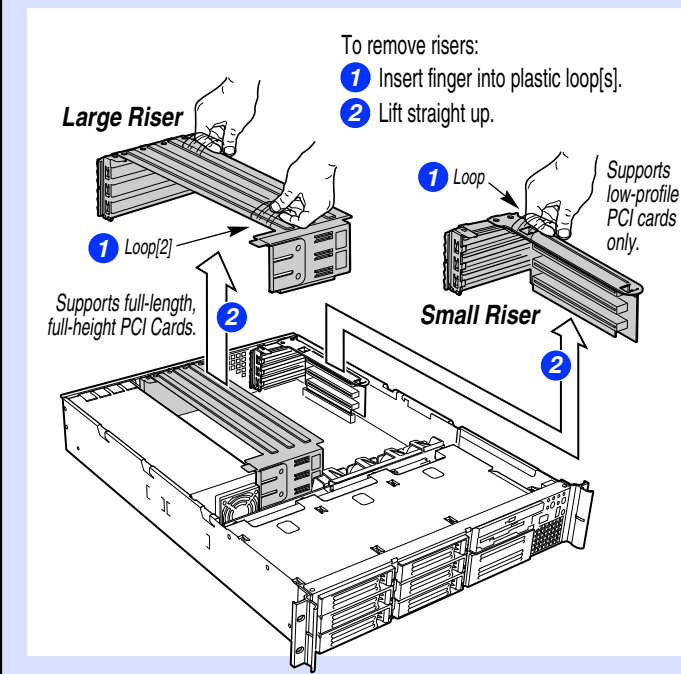
Fastener Identification Guide



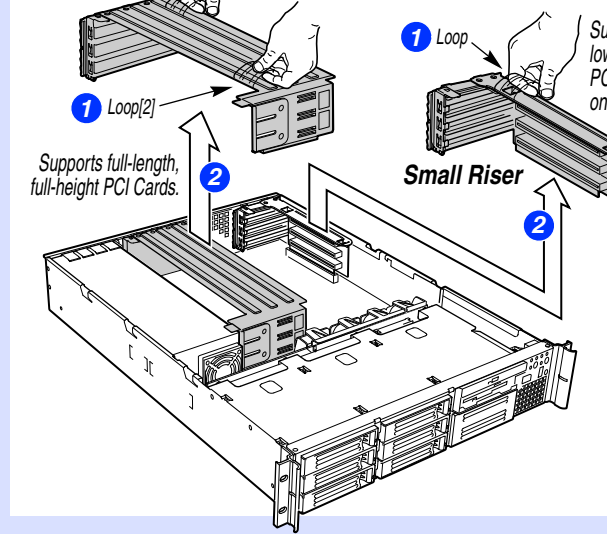
See *Server System Product Guide* for detailed service descriptions and procedures.

WARNING: Installation and service of this product to be performed only by qualified service personnel to avoid risk of injury from electrical shock or energy hazard.

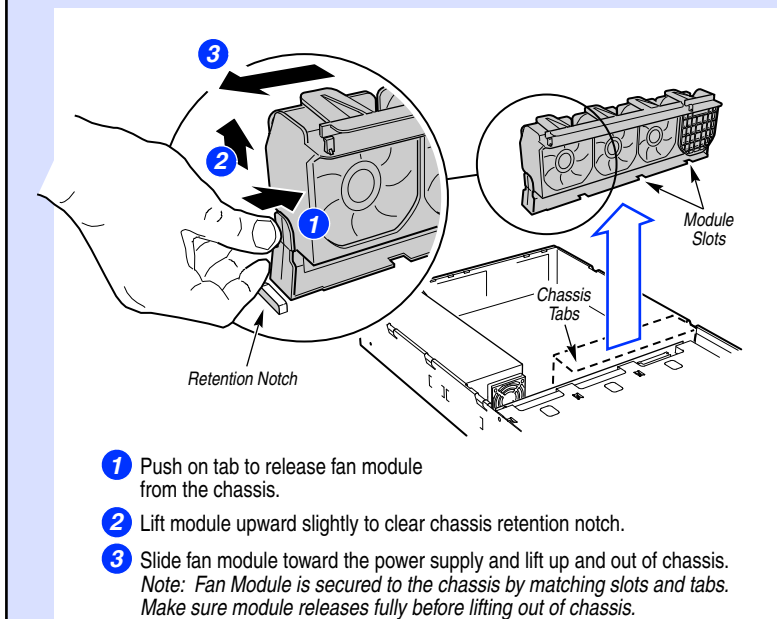
2 Removing Add-in Card Risers



To remove risers:
 1 Insert finger into plastic loop(s).
 2 Lift straight up.



3 Removing the Fan Module

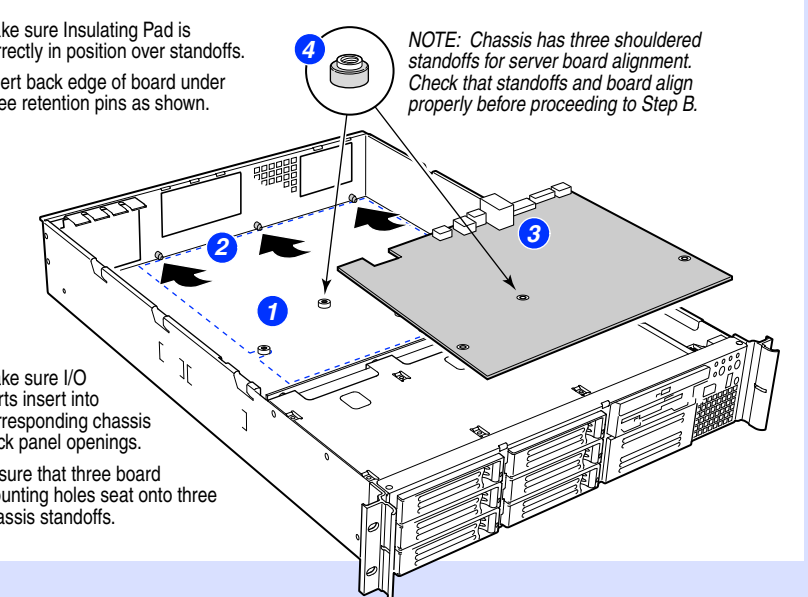


1 Push on tab to release fan module from the chassis.
 2 Lift module upward slightly to clear chassis retention notch.
 3 Slide fan module toward the power supply and lift up and out of chassis.
 Note: Fan Module is secured to the chassis by matching slots and tabs. Make sure module releases fully before lifting out of chassis.

4 Installing the Server Board

A Inserting Server Board into Chassis

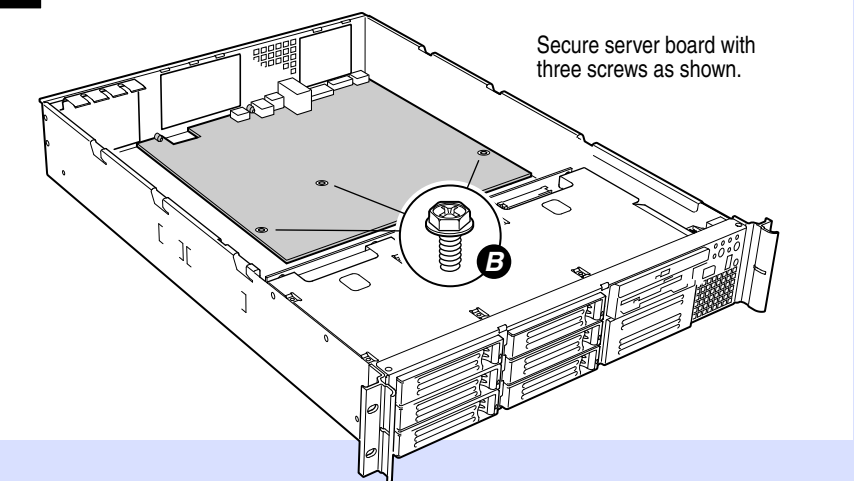
- 1 Make sure Insulating Pad is correctly in position over standoffs.
- 2 Insert back edge of board under three retention pins as shown.



NOTE: Chassis has three shouldered standoffs for server board alignment. Check that standoffs and board align properly before proceeding to Step B.

B Fastening Server Board to Chassis

Secure server board with three screws as shown.

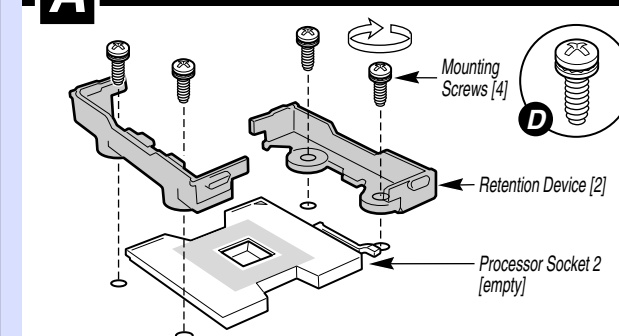


Go to SIDE 2

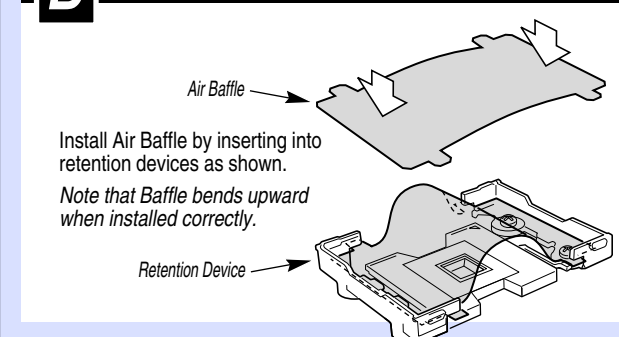
11 Install Processor Socket 2 Air Baffle

If you have installed only ONE processor, complete this step to maintain proper system airflow. If you have installed two processors, skip this step.

A Install the Processor Retention Devices



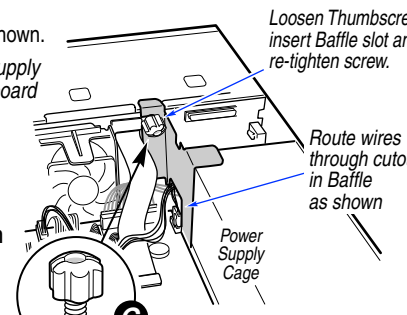
B Install the Air Baffle



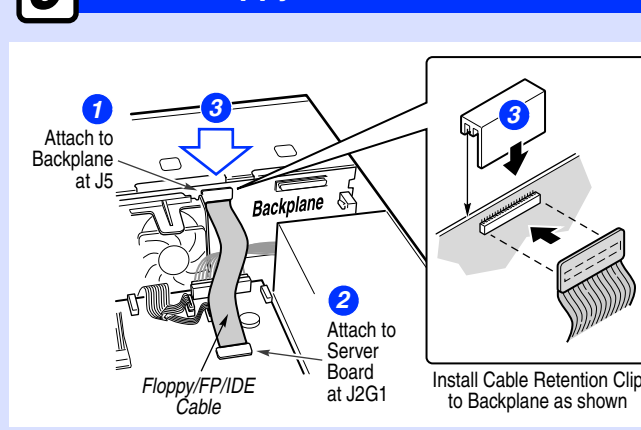
10 Install Chassis Air Baffle

Install Air Baffle as shown. Note that all power supply wiring to the server board should be positioned through the cutout at the bottom of the Air Baffle.

Baffle installation ensures proper air flow within your system.



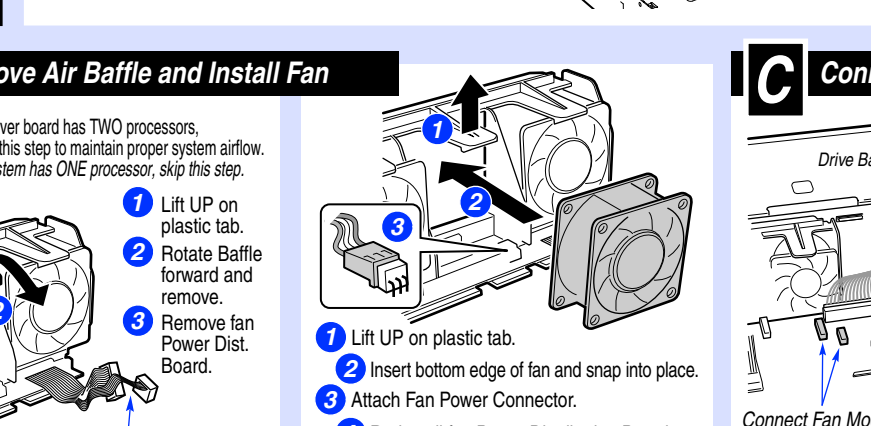
8 Install Floppy/FP/IDE Flex Cable



7 Install Fan Module

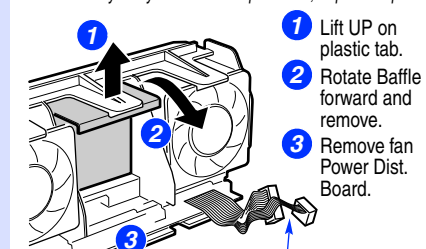
A Installing the Fan Module

- 1 Place fan module into chassis making sure mating slots and tabs line up correctly.
- 2 Slide fan module away from power supply to engage chassis tabs.
- 3 Make sure plastic tab on fan module snaps into place next to retention notch.

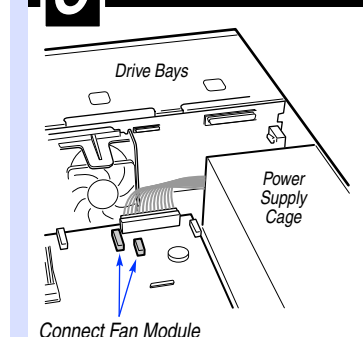


B Remove Air Baffle and Install Fan

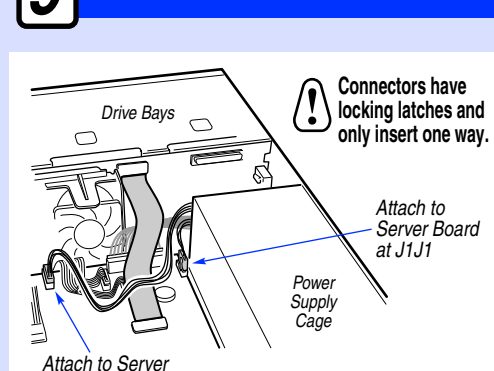
If your server board has TWO processors, complete this step to maintain proper system airflow. If your system has ONE processor, skip this step.



C Connect Pwr Cables



9 Attach Final Power Connectors



5 Install Processors, Heatsinks and Memory

Go to Server Board Quick Start User's Guide and install Processor(s), Heatsink(s) and Memory

6 Connect Server Board Primary Power

