



Intel® Entry Server Chassis SC5295-E UP/DP/WS/BRP Quick Start User's Guide

Thank you for buying the Intel® Entry Server Chassis SC5295-E. The following information will help you to prepare your chassis for integration with your selected Intel® Server Board.

These guides and other supporting documents (including a list of supported server boards) are located on the web at <http://support.intel.com/support/motherboards/server>.

If you are not familiar with ESD (Electrostatic Discharge) procedures used during system integration, please see the Intel® Entry Server Chassis SC5295-E User Guide, available on the CD or at <http://support.intel.com/go/serverbuilder>.

Warning

Read all caution and safety statements in this document before performing any of the instructions. Also see the *Intel® Server Board and Server Chassis Safety Information* document at: <http://support.intel.com/support/motherboards/server/sb/cs-010770.htm> for complete safety information.

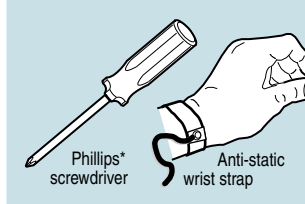
Warning

Installation and service of this product to be performed only by qualified service personnel to avoid risk of injury from electrical shock or energy hazard.

Caution

Observe normal ESD (Electrostatic Discharge) procedures during system integration to avoid possible damage to server board and/or other components.

Tools Required



Intel® Server Board Guide

Product Code	Intel® Server Board
SC5295UP	SE7230NH1-E
SC5295DP	SE7320EP2, SE7520BD2
SC5295WS	SE7525RP2
SC5295BRP	SE7320EP2, SE7520BD2

Building Value With Intel

Server Products, Programs and Support

Get the high-value server solutions you need by taking advantage of the outstanding value Intel provides to system integrators:

- High-quality server building blocks
- Extensive breadth of server building blocks
- Solutions and tools to enable e-Business
- Intel® Server Management
- Comprehensive training services
- Worldwide 24x7 technical support [AT&T Country Code + 866-655-6565]¹
- World-class service, including a three-year limited warranty and Advanced Warranty Replacement¹

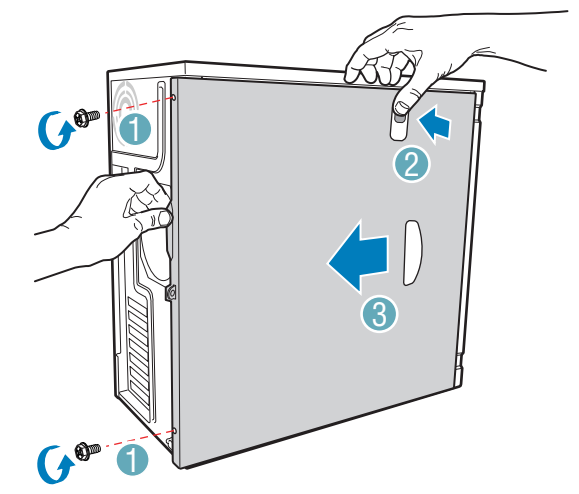
For more information on Intel's added-value server offerings, visit the Intel® ServerBuilder website at: www.intel.com/go/serverbuilder

Intel® ServerBuilder is your one-stop shop for information about all of Intel's Server Building Blocks such as:

- Product information, including product briefs and technical product specifications
- Sales tools, such as videos and presentations
- Training information, such as the Intel® Online Learning Center
- Support Information and much more

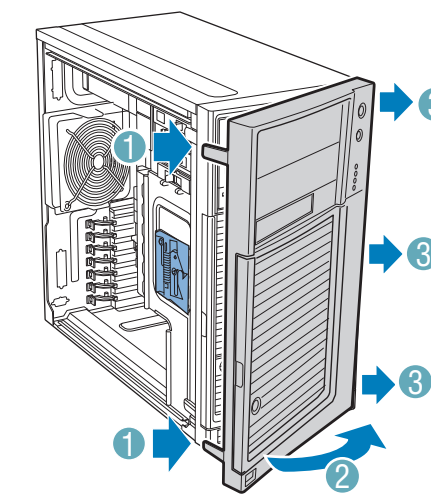
¹Available only to Intel® Channel Program Members, part of the Intel® e-Business Network.

1 Remove Side Cover



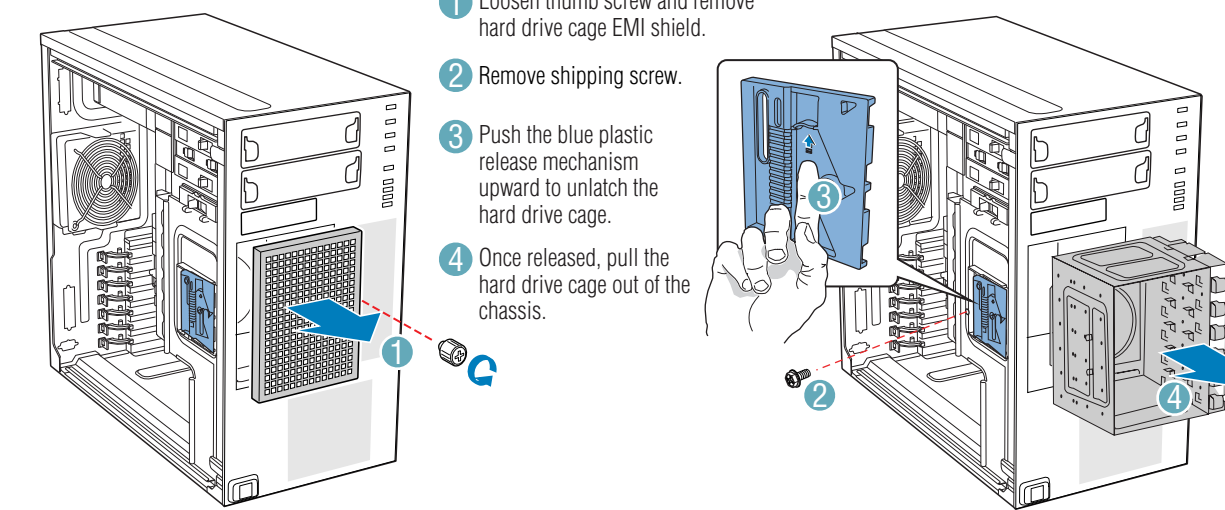
- 1 Remove two shipping screws.
- 2 Push in latch.
- 3 Slide side cover rearward and remove.

2 Remove Front Bezel Assembly



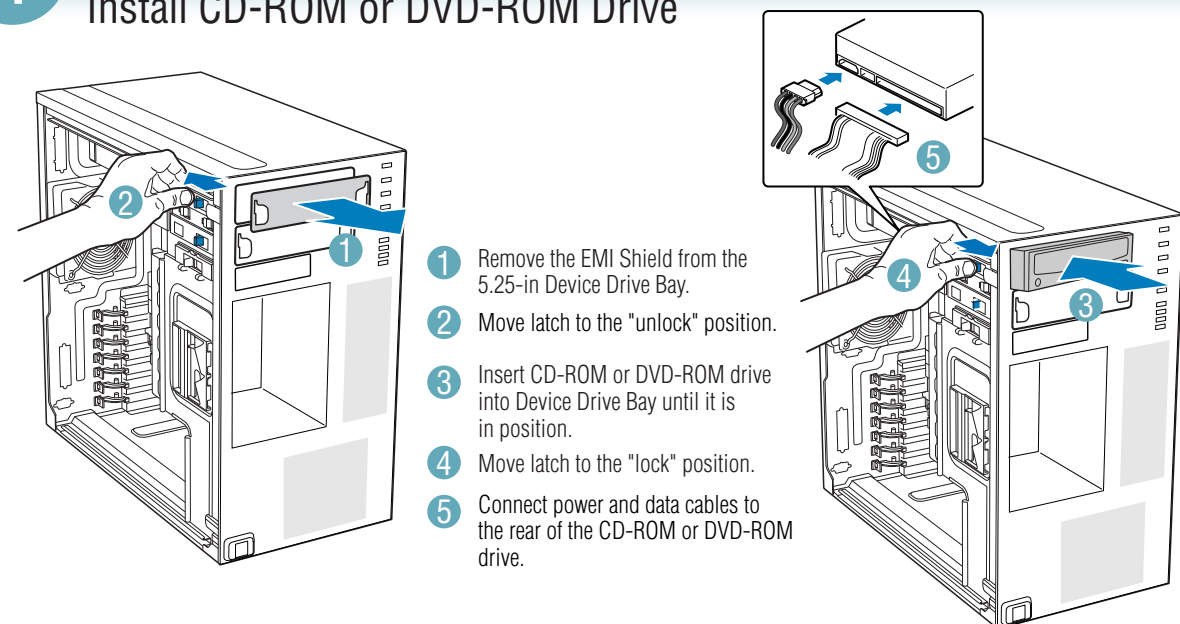
- 1 Disengage two bezel tabs from left side of chassis.
- 2 Rotate left side of front bezel assembly outward slightly.
- 3 Disengage three bezel clips that attach the right side of the bezel to the right side of the chassis and remove.

3 Remove Hard Drive Cage



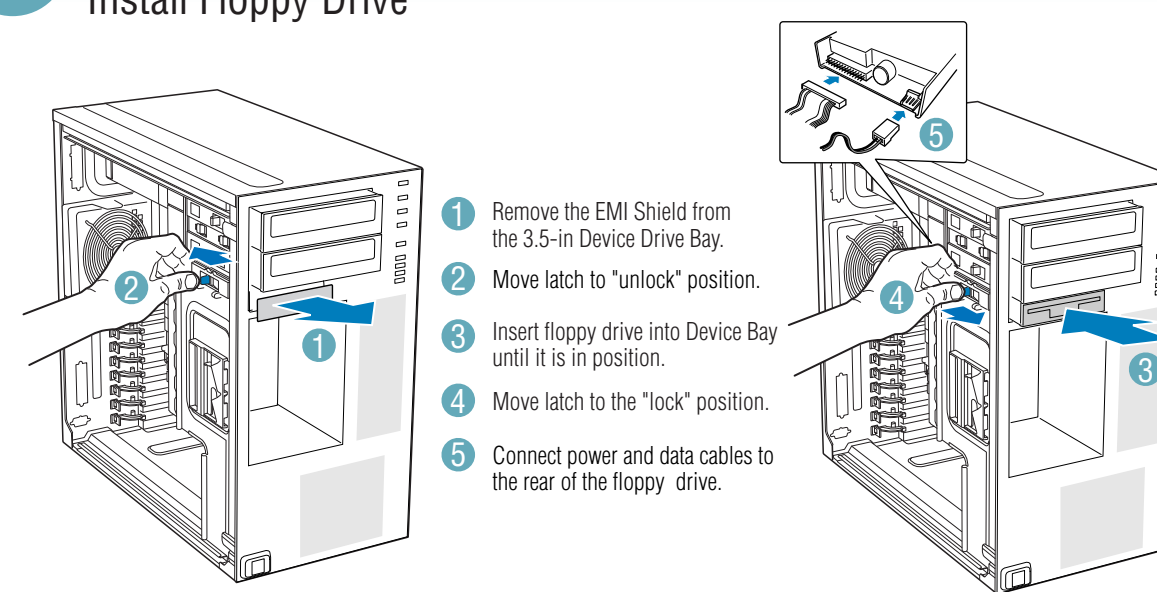
- 1 Loosen thumb screw and remove hard drive cage EMI shield.
- 2 Remove shipping screw.
- 3 Push the blue plastic release mechanism upward to unlatch the hard drive cage.
- 4 Once released, pull the hard drive cage out of the chassis.

4 Install CD-ROM or DVD-ROM Drive



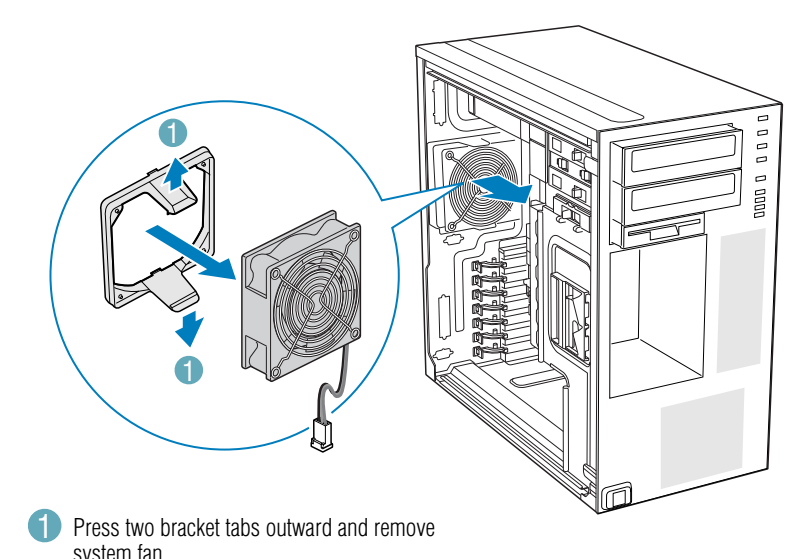
- 1 Remove the EMI Shield from the 5.25-in Device Drive Bay.
- 2 Move latch to the "unlock" position.
- 3 Insert CD-ROM or DVD-ROM drive into Device Drive Bay until it is in position.
- 4 Move latch to the "lock" position.
- 5 Connect power and data cables to the rear of the CD-ROM or DVD-ROM drive.

5 Install Floppy Drive



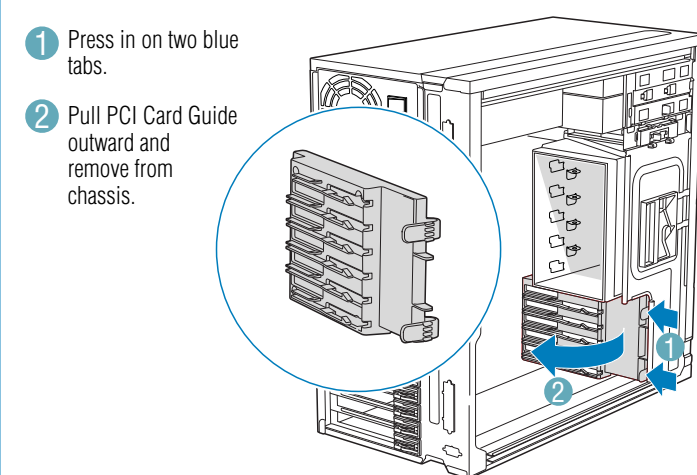
- 1 Remove the EMI Shield from the 3.5-in Device Drive Bay.
- 2 Move latch to "unlock" position.
- 3 Insert floppy drive into Device Bay until it is in position.
- 4 Move latch to the "lock" position.
- 5 Connect power and data cables to the rear of the floppy drive.

6 Remove System Fan



- 1 Press two bracket tabs outward and remove system fan.

7 Remove PCI Card Guide



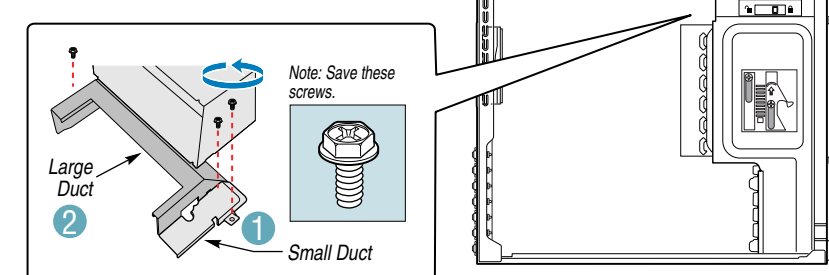
- 1 Press in on two blue tabs.
- 2 Pull PCI Card Guide outward and remove from chassis.

8 Install Server Board

Note: The SC5295UP version of the Entry Server Chassis SC5295-E does NOT have any CPU ducts to remove or install. You will only need to remove and install CPU ducts if you have a SC5295DP, SC5295WS, or SC5295BRP.

Part A: Remove CPU Ducts

Note: The CPU ducts must be removed prior to installing the server board.



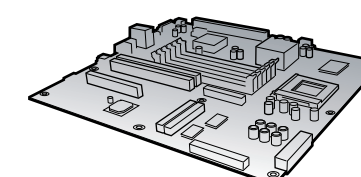
- 1 Remove the small duct (one screw).
- 2 Remove the large duct (two screws).

Part B: Install Server Board

See your Intel® Server Board Quick Start User's Guide for server board installation instructions and installation of the back panel I/O shield.

Use the mounting screws, bumpers and standoffs (if necessary) that came with your chassis to secure the server board to the chassis.

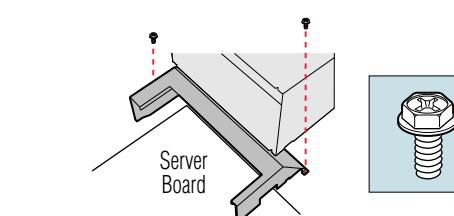
Open the Intel® Server Board box. Follow the instructions in the enclosed Intel® Server Board Quick Start User's Guide and return to this document when finished.



Part C: Install CPU Ducts

This duct should only be used with Active Thermal Solutions. DO NOT USE with a Passive Thermal Solution or the Intel® Workstation Cooling Kit.

- 1 Lower the large CPU duct into chassis and line up with two mounting holes in chassis.
- 2 Attach to chassis using the two screws you saved from Part A.



Only required for Intel® Server Boards SE7320EP2 and SE7525RP2:

- 3 Lower the small CPU duct into chassis and line up with mounting hole in chassis. Note: Tab on small CPU duct must engage corresponding opening in large CPU duct.
- 4 Attach to chassis using the single screw you saved from Part A.

